



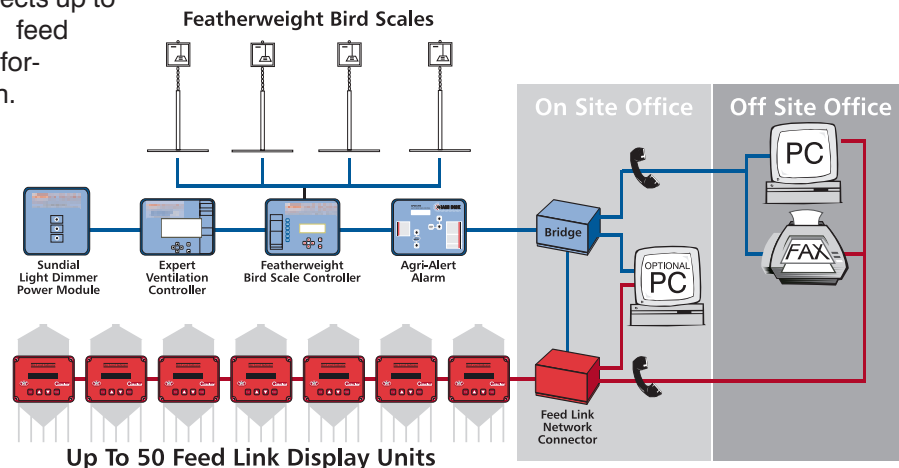
Real-time data on feed and water consumption, bird weight and environment...make decisions today to maximize profits tomorrow!

AGNET SOFTWARE

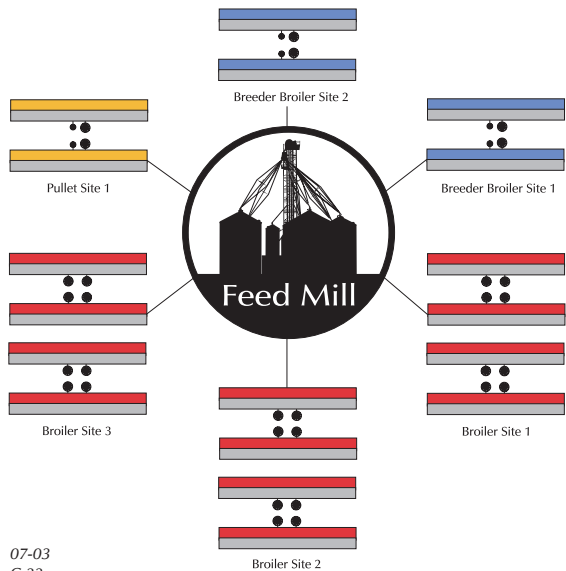
For the ultimate in a fully integrated management system, the Feed Link network controller can be connected to a Bridge allowing access to feed inventory and consumption data through proprietary Agnet software. In addition to monitoring the Feed link system, Agnet software also provides monitoring and control of Expert environmental controllers, Featherweight Bird Scales, Agri-Alert alarm systems, and Sundial Light Dimmers with a single software package.

The Integra Feed Link network collector connects up to fifty bin display units providing access to feed inventory and feed & water consumption information for an entire site from a single location. Data can be accessed from the network collector by utilizing the Feed Link software package on a PC either directly connected to the network collector or remotely via modem. The network collector's internal fax modem can be programmed, using the Feed Link software, to send feed inventory and water consumption status reports and low feed level warning reports to your home, office, feed mill or any location equipped with a fax.

Agnet Network System

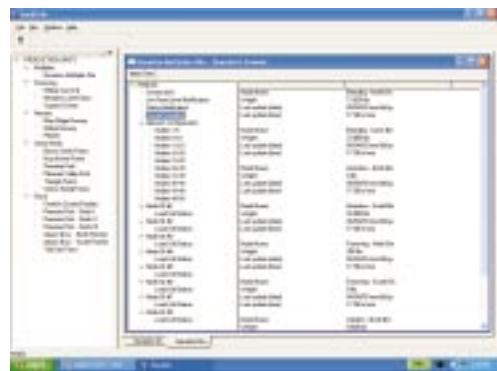


Feed Link System



FEED LINK SOFTWARE

With the easy to navigate Windows based Feed Link software package, the status of literally hundreds of sites can be monitored from a single PC via fax modem. The software package is also used to enter site information, fax numbers and parameters for the "fax out" feature of the network collector.



Cumberland INTEGRA
INTEGRATED MANAGEMENT SYSTEM
FEED-LINK



Cumberland Poultry Systems

07-03
C-33



P.O. Box 20 • Assumption, IL. 62510 USA • Tel.: 217/226-4401 • Fax: 800/353-8491
International Fax: 217/226-4420 • E-Mail: cumberland@cumberlandpoultry.com • www.cumberlandpoultry.com



The Integra Feed Link System from Cumberland provides a cost-effective method of monitoring and managing on-site feed inventory either at the site or from a remote location. Feed Link can be easily adapted to new or existing facilities to provide accurate real-time data regarding feed inventory levels and feed consumption.



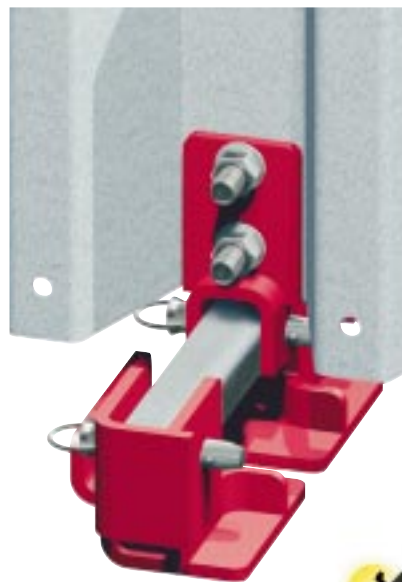
FEED LINK ELIMINATES TASK OF CLIMBING BINS

Feed Link eliminates the dangerous task of climbing bins to check feed levels improving worker safety and decreasing labor cost. With feed link, feed levels can be properly managed, eliminating emergency calls for feed and production losses associated with running out of feed.



INTEGRA FEED-LINK DISPLAY UNITS

The Feed Link display unit can be mounted either on the bin or inside the house up to one hundred feet away. The digital display can be set to display pounds, kilograms or percentage of full. The display unit also serves as the interface to perform a simple calibration procedure after the system has been installed.



LOAD CELL ASSEMBLY

The rugged load cell assemblies are specifically designed for the harsh environment of a poultry facility and adapt easily to most feed bins utilizing the existing anchor bolts. Two models of load cells are available, a standard unit for up to 5,000 lbs. (2,250 kg.) per bin leg and a high capacity model rated at up to 10,000 lbs. (4,500 kg.) per bin leg. The compact design of the load cell assemblies increases the overall height of the feed bin by approximately three inches. (eight centimeters)



Minimum Cost



Maximum Accuracy

The unique patent pending field calibration system utilized by Feed-Link makes it possible to monitor the weight of feed without requiring a load cell under every leg of the bin. This feature allows for the most economical installation possible. For monitoring feed consumption, placing a load cell under every leg will provide maximum accuracy.

WATER PULSE METER



Each display unit has an input for a water pulse meter allowing water consumption to be monitored using the Feed Link software. The network collector collects and stores water consumption data for a rolling 24-hour period providing you with another tool to monitor water consumption of the birds.

STATUS REPORTS AUTOMATICALLY SENT



Feed Inventory and water consumption status reports can be direct faxed from the network collector at scheduled intervals. Low level reports are automatically sent when any bin on the network falls below a pre-set level providing an instant warning. Status and low-level reports can also be received via e-mail by utilizing an internet fax service provider.

CUMBERLAND FEED LINK SPECIFICATIONS

Description	
Input Power	110/220 Volt - 50/60 Hz
Display Resolution	20 lbs. - 10 Kg - 1%
Display Temp Range	-5 to 150°F / -20 to 65°C
Water Pulse Meter	1 gal. / 3.8 liters per pulse
Maximum Weight per Load Cell	
Standard Load Cell	5,000 lbs. / 2,250 kg.
High Capacity Load Cell	10,000 lbs. / 4,500 kg.

